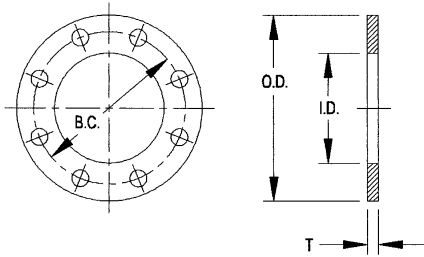


Western Pacific Products, Inc.

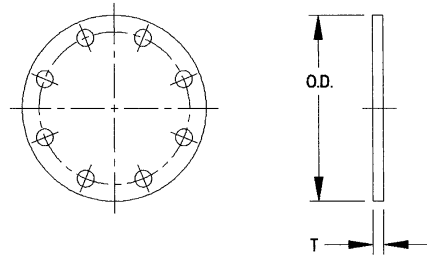
Anything In Or On Your Tank – Ready to Ship

Over 8,000 Part Numbers – Over 26,000 Square Feet of Warehouse – We Ship Worldwide

WELDING FLANGES



WELD FLANGE



BLIND FLANGE

Size	Material	WELD FLANGE	BLIND FLANGE	Thickness	O.D.	I.D.	B.C.	No. of Holes	Hole Size
		Part No.	Part No.						
2"	Steel	WF201MS	BWF201MS	$\frac{1}{4}$	$4\text{-}\frac{1}{2}$	$2\text{-}\frac{7}{16}$	$3\text{-}\frac{3}{4}$	6	$\frac{7}{16}$
	Aluminum	WF201AL	BWF201AL	$\frac{3}{8}$					
3"	Steel	WF301MS	BWF301MS	$\frac{1}{4}$	$5\text{-}\frac{5}{8}$	$3\text{-}\frac{9}{16}$	$4\text{-}\frac{7}{8}$	8	$\frac{7}{16}$
	Aluminum	WF301AL	BWF301AL	$\frac{3}{8}$					
4"	Steel	WF401MS	BWF401MS	$\frac{5}{16}$	$6\text{-}\frac{5}{8}$	$4\text{-}\frac{9}{16}$	$5\text{-}\frac{7}{8}$	8	$\frac{7}{16}$
	Aluminum	WF401AL	BWF401AL	$\frac{3}{8}$					
5"	Steel	WF501MS	BWF501MS	$\frac{5}{16}$	$7\text{-}\frac{3}{4}$	$5\text{-}\frac{9}{16}$	7	12	$\frac{7}{16}$
	Aluminum	WF501AL	BWF501AL	$\frac{3}{8}$					
6"	Steel	WF601MS	BWF601MS	$\frac{5}{16}$	9	$6\text{-}\frac{11}{16}$	$8\text{-}\frac{1}{8}$	12	$\frac{7}{16}$
	Aluminum	WF601AL	BWF601AL	$\frac{3}{8}$					
8"	Steel	WF801MS	BWF801MS	$\frac{1}{2}$	$10\text{-}\frac{7}{8}$	$8\text{-}\frac{11}{16}$	$10\text{-}\frac{1}{8}$	16	$\frac{7}{16}$
	Aluminum	WF801AL	BWF801AL	$\frac{1}{2}$					
12"	Steel	WF1201MS		$\frac{1}{2}$	$15\text{-}\frac{3}{4}$	$12\text{-}\frac{13}{16}$	$14\text{-}\frac{1}{2}$	8	$\frac{5}{8}$

NOTE: Drilling in accordance with TTMA recommended standards



800-677-3711

Signal Hill, (L.A.) CA

(562) 490-0030 • Fax (562) 490-0091

West Sacramento, CA

(916) 371-1622 • Fax (916) 371-4792

Dallas/Fort Worth, TX

(817) 740-8077 • (817) 740-1332

Portland, OR

(503) 221-0335 • Fax (503) 221-0911

www.tankparts.com

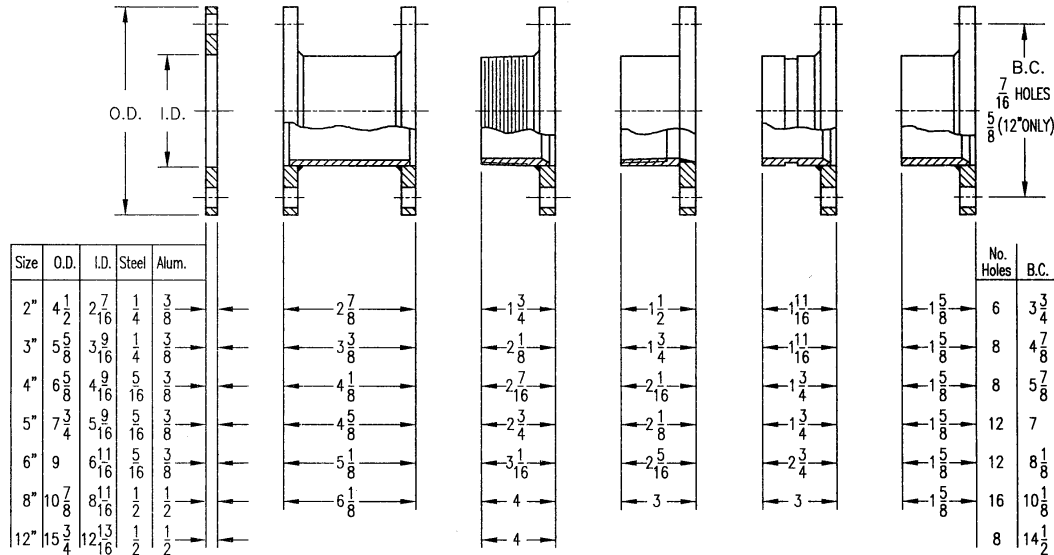
1-122

Western Pacific Products, Inc.

Anything In Or On Your Tank – Ready to Ship

Over 8,000 Part Numbers – Over 26,000 Square Feet of Warehouse – We Ship Worldwide

SPACERS and ADAPTERS



PART NUMBERS

Size	Material	SINGLE SPACER Part No.	DOUBLE FLANGED Part No.	FLANGE and THREADED Part No.	FLANGE and HALF COUPLING Part No.	FLANGE and GROOVED Part No.	FLANGE and WELDING NECK Part No.
2"	Steel	WF201MS	DF2MS	FT2MS	FH2MS	FG2MS	FW2MS
	Aluminum	WF201AL	DF2AL	FT2AL	FH2AL	FG2AL	FW2AL
3"	Steel	WF301MS	DF3MS	FT3MS	FH3MS	FG3MS	FW3MS
	Aluminum	WF301AL	DF3AL	FT3AL	FH3AL	FG3AL	FW3AL
4"	Steel	WF401MS	DF4MS	FT4MS	FH4MS	FG4MS	FW4MS
	Aluminum	WF401AL	DF4AL	FT4AL	FH4AL	FG4AL	FW4AL
5"	Steel	WF501MS	DF5MS	FT5MS	FH5MS	FG5MS	FW5MS
	Aluminum	WF501AL	DF5AL	FT5AL	FH5AL	FG5AL	FW5AL
6"	Steel	WF601MS	DF6MS	FT6MS	FH6MS	FG6MS	FW6MS
	Aluminum	WF601AL	DF6AL	FT6AL	FH6AL	FG6AL	FW6AL
8"	Steel	WF801MS	DF8MS	FT8MS	FH8MS	FG8MS	FW8MS
	Aluminum	WF801AL	DF8AL	FT8AL	FH8AL	FG8AL	FW8AL
12"	Steel	WF1201MS		FT12MS			

NOTES: All flanges are drilled for TTMA Standard bolt circles. Dimensions shown are standard lengths. Longer lengths available on request. Standard Double Flanged Spacer and Gasket with Wet-R-Dri Valve equals Gate Valve dimensions. See Section 40, Page 2A for gaskets

Betts™ INDUSTRIES, INC.
WARREN, PA.

800-677-3711

Signal Hill, (L.A.) CA
(562) 490-0030 • Fax (562) 490-0091

West Sacramento, CA
(916) 371-1622 • Fax (916) 371-4792

Dallas/Fort Worth, TX
(817) 740-8077 • (817) 740-1332

Portland, OR
(503) 221-0335 • Fax (503) 221-0911

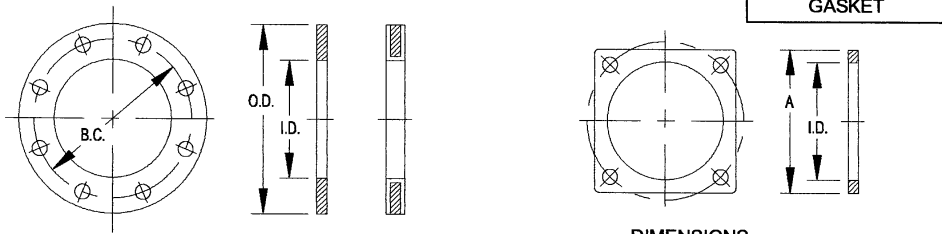
www.tankparts.com

1-123

Western Pacific Products, Inc.

Anything In Or On Your Tank – Ready to Ship

Over 8,000 Part Numbers – Over 26,000 Square Feet of Warehouse – We Ship Worldwide



DIMENSIONS

Size	Material	Part No.	O.D.	I.D.	B.C.	No. of Holes	Hole Size	A
ROUND FLANGE GASKETS								
2"	Cork-Buna-N	RGA201CB	4-1/2	2-5/8	3-3/4	6	7/16	
	Non-Asbestos	RGA201NA						
	Teflon Env. Slit	RGA201TF		2-1/4				
	Teflon Env. Milled	RGA201TF-MIL						
3"	Cork-Buna-N	RGA301CB	5-5/8	3-3/4	4-7/8	8	7/16	
	Non-Asbestos	RGA301NA						
	Teflon Env. Slit	RGA301TF		3-1/4				
	Teflon Env. Milled	RGA301TF-MIL		3-3/8				
4"	Cork-Buna-N	RGA401CB	6-5/8	4-3/4	5-7/8	8	7/16	
	Non-Asbestos	RGA401NA						
	Teflon Env. Slit	RGA401TF		4-5/16				
	Teflon Env. Milled	RGA401TF-MIL		4-3/8				
5"	Cork-Buna-N	RGA501CB	7-3/4	5-9/16	7	12	7/16	
6"	Cork-Buna-N	RGA601CB	9	6-11/16	8-1/8	12	7/16	
	Non-Asbestos	RGA601NA						
	Teflon Env. Slit	RGA601TF		6-1/16				
	Teflon Env. Milled	RGA601TF-MIL						
8"	Cork-Buna-N	RGA801CB	10-1/8	8-5/8	10-1/8	16	7/16	
12"	Cork-Buna-N	RGA1201CB	15-3/4	12-13/16	14-1/2	8	5/8	
SQUARE FLANGE GASKETS								
2"	Cork-Buna-N	SGA201CB		2-15/16	4-1/2	4	17/32	4-1/4
	Non-Asbestos	SGA201NA						
3"	Cork-Buna-N	SGA301CB		3-9/16	5	4	9/16	4-3/4
	Non-Asbestos	SGA301NA						
DRAIN SUMP GASKETS								
3"	Cork-Buna-N	G15181CB	7-1/4	5	6-1/4	6	9/16	
	Non-Asbestos	G15181NA		4-3/4				
	Teflon Env. Slit	G15181TF		5				
	Teflon Env. Milled	G15181TF-MIL						
4"	Cork-Buna-N	G15266CB	8-1/4	6-1/8	7-1/4	8	9/16	
	Non-Asbestos	G15266NA						
	Teflon Env. Slit	G15266TF		5-3/4				
	Teflon Env. Milled	G15266TF-MIL		6				
6"	Cork-Buna-N	G25507CB	10-1/4	8-1/4	9-1/4	12	9/16	
	Non-Asbestos	G25507NA						
	Teflon Env. Slit	G25507TF		7-3/4				
	Teflon Env. Milled	G25507TF-MIL		8-3/16				
SPECIAL DRAIN SUMP GASKET-Use on outlet side of internal Hydraulic Valve CH45843SST								
4"	Teflon Env. Milled	G27229TF-MIL	8-1/4	4-1/4	7-1/4	8	9/16	

NOTE: Drilling in accordance with TTMA recommended standards.

Betts[™] INDUSTRIES, INC.
WARREN, PA.

800-677-3711

Signal Hill, (L.A.) CA
(562) 490-0030 • Fax (562) 490-0091

West Sacramento, CA
(916) 371-1622 • Fax (916) 371-4792

Dallas/Fort Worth, TX
(817) 740-8077 • (817) 740-1332

Portland, OR
(503) 221-0335 • Fax (503) 221-0911

www.tankparts.com

1-124