

Western Pacific Products, Inc.

Anything In Or On Your Tank – Ready to Ship

Over 8,000 Part Numbers – Over 26,000 Square Feet of Warehouse – We Ship Worldwide

Vent Accessories

EMISSION COLLECTION HOOD

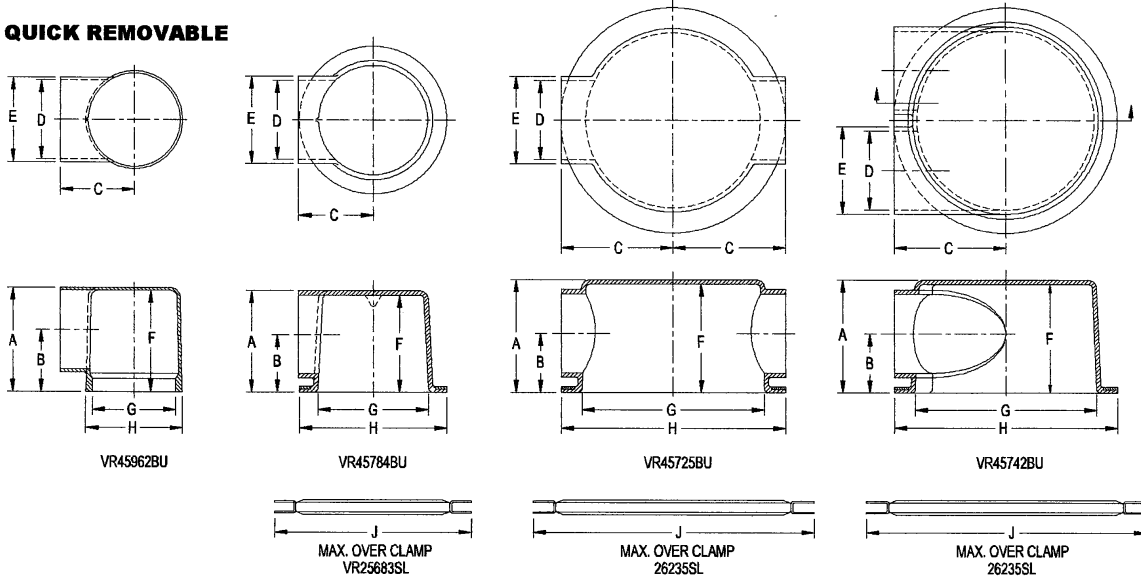
Use with Betts Push Type
or Air Operated Vents

ATTACHES TO POSITIVE VENT

MOLDED URETHANE

VERSATILE

QUICK REMOVABLE



The Betts emission collection hood provides an economical means of collecting the vapors generated while filling the tank. The hood is designed to collapse in case of rollover without adversely affecting the product retention of the cargo tank.

Large hoods with two outlets are provided with end cap for lugging one outlet, if necessary.

NOTE: Effective protection against overfilling should be provided.

*To order hood assemblies less mounting clamp, add suffix "001" to assembly number.

Example: VR45725BU001

DIMENSIONS

MODEL	A	B	C	D	E	F	G	H	J
45742	5	2 ⁷ / ₈	5	3 ¹ / ₂	3 ¹ / ₈	4 ¹³ / ₁₆	8 ⁷ / ₈	10	12 ¹ / ₄
45725	5	2 ⁷ / ₈	5	3 ¹ / ₂	3 ¹ / ₈	4 ¹³ / ₁₆	8 ⁷ / ₈	10	12 ¹ / ₄
45784	4 ¹ / ₂	2 ⁹ / ₁₆	3 ³ / ₈	3 ¹ / ₂	3 ¹ / ₈	4 ⁹ / ₁₆	4 ¹⁵ / ₁₆	6 ⁵ / ₈	8 ³ / ₄
45962	4 ⁵ / ₈	2 ¹ / ₈	3 ⁵ / ₁₆	3 ⁹ / ₁₆	3 ¹³ / ₁₆	4 ¹ / ₂	3 ¹³ / ₁₆	4 ⁵ / ₁₆	---

Description	Material	Wt.	Assembly No.
Two Outlets – 180° Apart	Urethane	3.5	VR45725BU
Two Outlets – Same Side			VR45742BU

Includes mounting clamp 26235SL, two outlet clamp 17191SL, and coupling cap 16968AL, and one coupling 16451AL.

These hoods designed for 5" vents.

NOTE: Mounting flange may be drilled to fit the bolt circle of other vents.

One Outlet (small size)	Urethane	2.1	VR45784BU
-------------------------	----------	-----	-----------

* Includes mounting clamp VR25683SL, outlet clamp 17191SL, and coupling 16451AL.

This hood designed for 3¹/₂" bolted style vents.

One Outlet (small size)	Urethane	1	VR45962BU
-------------------------	----------	---	-----------

Indicates mounting clamp 17630SL, outlet clamp 17191, and coupling 16451AL.

This hood designed for 3¹/₂" threaded style vents.

Betts™
INDUSTRIES, INC.
WARREN, PA.

800-677-3711

Signal Hill, (L.A.) CA
(562) 490-0030 • Fax (562) 490-0091

West Sacramento, CA
(916) 371-1622 • Fax (916) 371-4792

Dallas/Fort Worth, TX
(817) 740-8077 • (817) 740-1332

Portland, OR
(503) 221-0335 • Fax (503) 221-0911

www.tankparts.com

1-205

Western Pacific Products, Inc.

Anything In Or On Your Tank – Ready to Ship

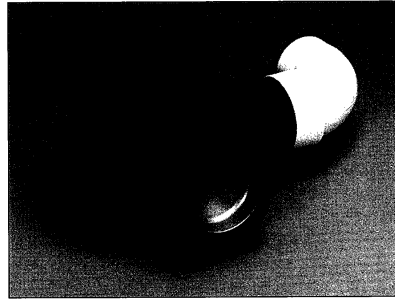
Over 8,000 Part Numbers – Over 26,000 Square Feet of Warehouse – We Ship Worldwide

F270 Vapor Recovery Hood

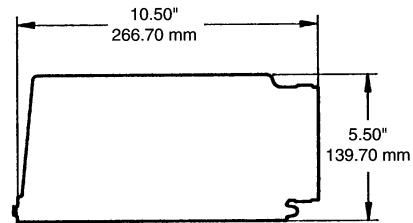
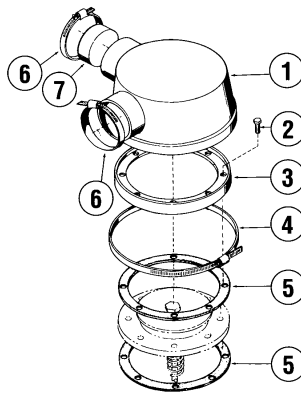
EMCO WHEATON™

FEATURES AND BENEFITS

- Used with F265 vents to convert mechanical vent to vapor recovery.
- Two 3" outlets. 90° apart for flexibility of connection to vapor header or roll-over rail.
- Collapsible hood.



VENTS & HOODS



DESCRIPTION AND PART NUMBERS

PART NUMBER	DESCRIPTION	WEIGHT
F270-901	5" F270-002, less elbow	3.25 lbs - 1.47 kg

REF	DESCRIPTION	PART # F270-901 5"	REQ'D	MATERIAL
1	Vapor Recovery Hood	408479	1	Buna
2	Hex Head Screws	405766	8	Steel
3	Adapter	561446	1	Aluminum
4	Clamp and band	408483	1	Stainless Steel
5	Gaskets	443543	2	Corprene
6	Clamps	408480	2	Stainless Steel
7	Plug	408481	1	Aluminum

EW
Another Symbol of Emco Wheaton Quality

800-677-3711

Signal Hill, (L.A.) CA
(562) 490-0030 • Fax (562) 490-0091

West Sacramento, CA
(916) 371-1622 • Fax (916) 371-4792

Dallas/Fort Worth, TX
(817) 740-8077 • (817) 740-1332

Portland, OR
(503) 221-0335 • Fax (503) 221-0911

www.tankparts.com

1-206

Western Pacific Products, Inc.

Anything In Or On Your Tank – Ready to Ship

Over 8,000 Part Numbers – Over 26,000 Square Feet of Warehouse – We Ship Worldwide

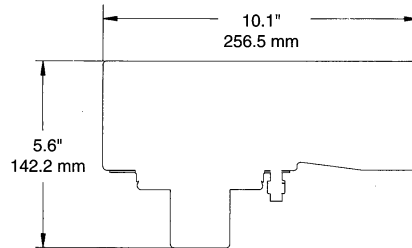
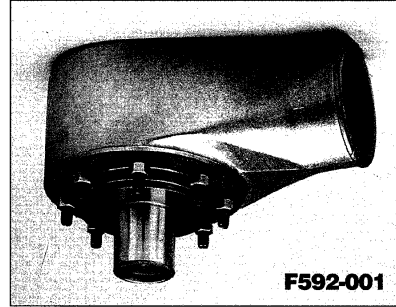
F592 3" Vapor Valve

EMCO WHEATON™

VENTS & HOODS

FEATURES AND BENEFITS

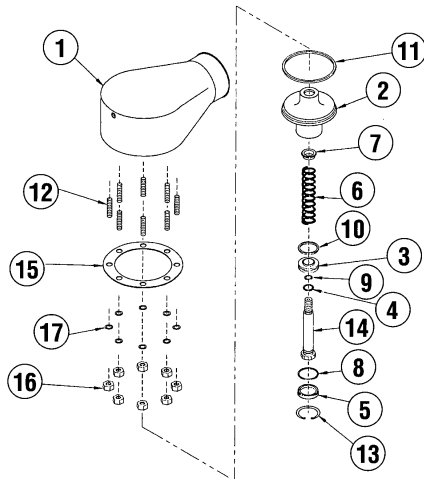
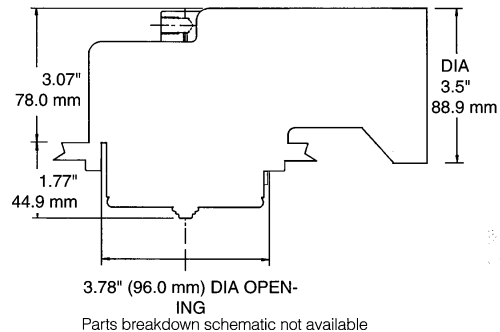
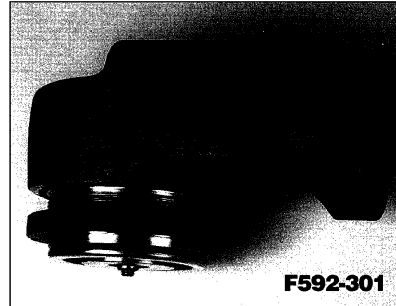
- Unique piston design allows highest flow rate in this size valve. 7.354 square inches of flow area.
- Poppet opens inward (into tank) to prevent leakage from product surges or from overturn of tank.
- Lightweight aluminum hood and low profile; 3 1/2" from top of manhole.
- Tapered seat design with Viton O-ring seal provides leak-tight seal.
- Stainless steel internal trim resists corrosion.
- External pneumatic connection.
- Installs easily in 20" manhole or separate 3" TTMA size mounting ring.



DESCRIPTION AND PART NUMBERS

PART NUMBER	DESCRIPTION	WEIGHT
★F592-001★	DISCONTINUED	5.75 lbs - 2.61 kg
F592-301	Viton Seals	

NOTE: New variants available. See separate flyer.



800-677-3711

Signal Hill, (L.A.) CA

(562) 490-0030 • Fax (562) 490-0091

West Sacramento, CA

(916) 371-1622 • Fax (916) 371-4792

Dallas/Fort Worth, TX

(817) 740-8077 • (817) 740-1332

Portland, OR

(503) 221-0335 • Fax (503) 221-0911

www.tankparts.com

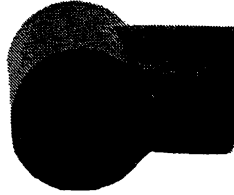
1-207

Western Pacific Products, Inc.

Anything In Or On Your Tank – Ready to Ship

Over 8,000 Part Numbers – Over 26,000 Square Feet of Warehouse – We Ship Worldwide

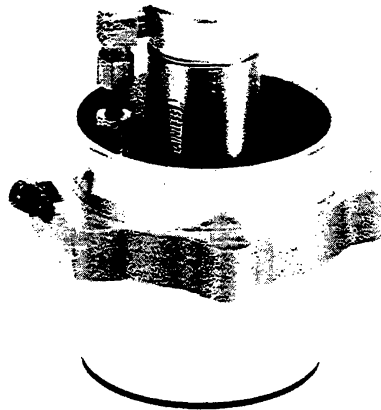
Vapor Recovery Hood



1810



Vapor Recovery Vent



VE 0002

The new VE 0002 Aluminum Vapor Recovery Vent is designed to present a low profile. The unit is operated by an air actuated cylinder with ¼" connections outside the tank compartment.

The Vent opens into the tank which increases flow capacity into the recovery line and prevents leakage due to surge.

This unit — VE 0002 — is designed to fit the hole pattern on existing KNAPPCO covers.

A flexible Hood Kit is available.

1-175

800-677-3711

Signal Hill, (L.A.) CA

(562) 490-0030 • Fax (562) 490-0091

West Sacramento, CA

(916) 371-1622 • Fax (916) 371-4792

Dallas/Fort Worth, TX

(817) 740-8077 • (817) 740-1332

Portland, OR

(503) 221-0335 • Fax (503) 221-0911

www.tankparts.com

1-208